

# TRI-GLIDE



# TRI-GLIDE

## 3-POINT MOVING SYSTEM

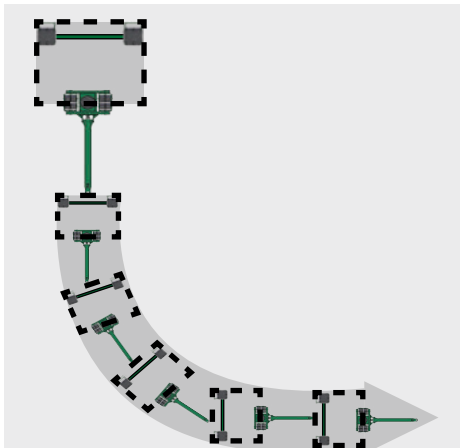
Offers a stable configuration, ensuring that all skates are taking load the during the move.



Using Center of Gravity, the front unit is placed under the load.



Placing the dollies where support is needed ensures the rear dollies will be kept parallel in order to track properly when moving.

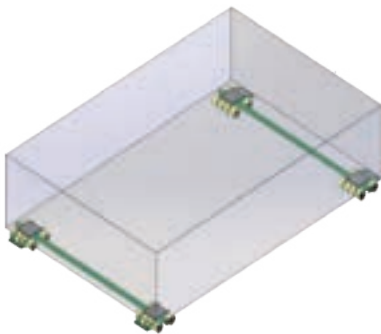


As the load is steered with the front unit, the rear dollies will follow, providing the user with a wide range of mobility.

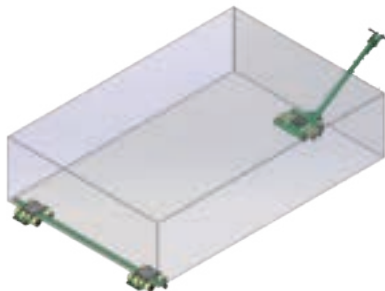
## CONFIGURATIONS

The Hilman Tri-Glide System offers articulation in both the front and rear units and can be combined and configured to further stabilize bulky loads.

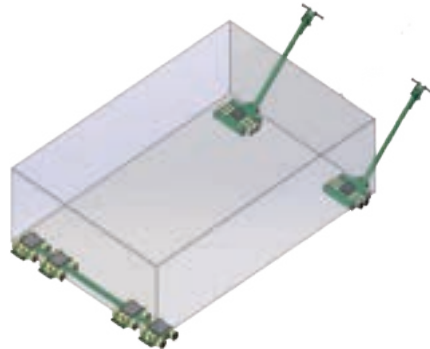
4-Point Moving Solution  
Two Rear Units with Spreader Bars



3-Point Moving Solution  
One Front Unit  
One Rear Unit with Spreader Bar



4-Point Moving Solution  
Two Front Units  
One Rear Unit with Spreader Bar

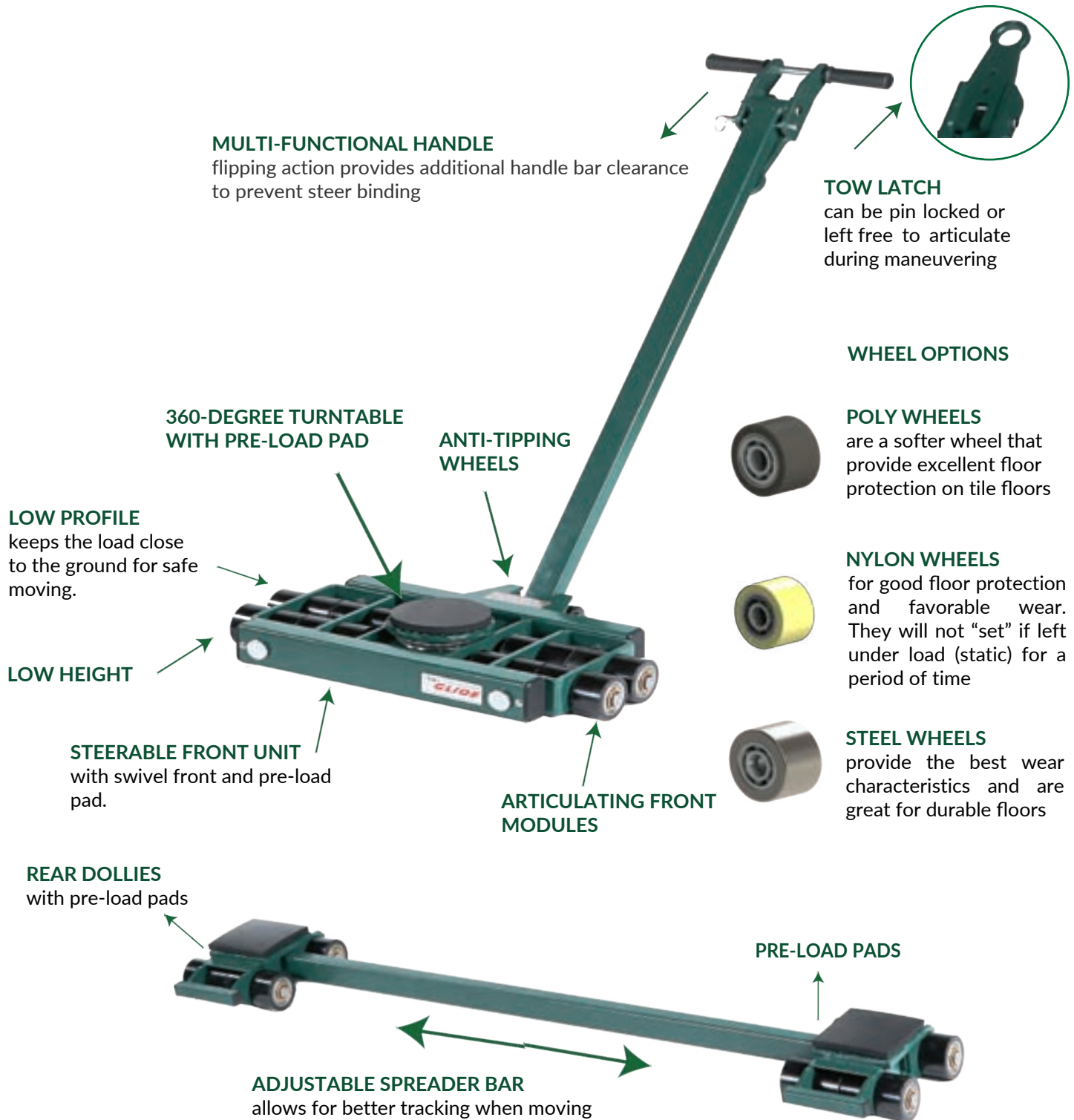


*Images are for representation purposes only. Actual product configuration and support points will differ based on the load.*



# ADVANTAGES

The Hilman Tri-Glide provides a stable, efficient solution for moving heavy loads, and is designed with a large footprint to spread the weight of the load over a greater area. Our Polyurethane and Nylon wheels offer floor protection suited for a variety of floor surfaces.



# 10, 15 & 20 TON

Hilman Tri-Glide components can be purchased individually to accommodate user preference. All units come with pre-load pads for the front unit and rear dollies.

## KTG-10P



## KTG-15P



## KTG-20P



## KITS

Hilman Part #	Capacity	Wheel Type	Wheel Count	Height (w/pad)		Height (w/o pad)		Weight (lb)	Handle Length		Alignment Bar	
				(in)	(mm)	(in)	(mm)		(in)	(mm)	(in)	(mm)
KTG-10N	10 ton	Nylon	8/8	4.5	114	4	102	155	49.5	1257	60	1524
KTG-10P	10 ton	Polyurethane	8/8	4.5	114	4	102	161	49.5	1257	60	1524
KTG-10S	10 ton	Steel	8/8	4.5	114	4	102	193	49.5	1257	60	1524
KTG-15N	15 ton	Nylon	12/12	4.5	114	4	102	168	49.5	1257	60	1524
KTG-15P	15 ton	Polyurethane	12/12	4.5	114	4	102	181	49.5	1257	60	1524
KTG-15S	15 ton	Steel	12/12	4.5	114	4	102	236	49.5	1257	60	1524
KTG-20N	20 ton	Nylon	16/16	4.5	114	4	102	184	49.5	1257	60	1524
KTG-20P	20 ton	Polyurethane	16/16	4.5	114	4	102	198	49.5	1257	60	1524
KTG-20S	20 ton	Steel	16/16	4.5	114	4	102	260	49.5	1257	60	1524

All kits include: (1) Front Unit with Handle and (2) Rear Dollies with a Spreader Bar

## INDIVIDUAL FRONT

Hilman Part #	Capacity	Type	Width (in)	Height (w/pad)		Height (w/o pad)		Wheel Size		Roller Type	Weight (lb)
				(in)	(mm)	(in)	(mm)	(in)	(mm)		
TG-F5N	5 ton	Front	17.875	4.5	114	4	102	∅3.13	79	Nylon	96
TG-F5P	5 ton	Front	17.875	4.5	114	4	102	∅3.13	79	Poly	99
TG-F5S	5 ton	Front	17.875	4.5	114	4	102	∅3.13	79	Steel	115
TG-F7.5N	7.5 ton	Front	22.6875	4.5	114	4	102	∅3.13	79	Nylon	106
TG-F7.5P	7.5 ton	Front	22.6875	4.5	114	4	102	∅3.13	79	Poly	113
TG-F7.5S	7.5 ton	Front	22.6875	4.5	114	4	102	∅3.13	79	Steel	145
TG-F10N	10 ton	Front	26.6875	4.5	114	4	102	∅3.13	79	Nylon	113
TG-F10P	10 ton	Front	26.6875	4.5	114	4	102	∅3.13	79	Poly	120
TG-F10S	10 ton	Front	26.6875	4.5	114	4	102	∅3.13	79	Steel	151

Includes: (1) Front Unit with a Multi-functional Handle for pulling or towing

## INDIVIDUAL REAR

Hilman Part #	Capacity	Type	Width (in)	Height (w/pad)		Height (w/o pad)		Wheel Size		Roller Type	Weight (lb)
				(in)	(mm)	(in)	(mm)	(in)	(mm)		
TG-R5N	5 ton	Rear	6.25	4.5	114	4	102	∅3.13	79	Nylon	59
TG-R5P	5 ton	Rear	6.25	4.5	114	4	102	∅3.13	79	Poly	62
TG-R5S	5 ton	Rear	6.25	4.5	114	4	102	∅3.13	79	Steel	78
TG-R7.5N	7.5 ton	Rear	7.6875	4.5	114	4	102	∅3.13	79	Nylon	62
TG-R7.5P	7.5 ton	Rear	7.6875	4.5	114	4	102	∅3.13	79	Poly	68
TG-R7.5S	7.5 ton	Rear	7.6875	4.5	114	4	102	∅3.13	79	Steel	91
TG-R10N	10 ton	Rear	9.6875	4.5	114	4	102	∅3.13	79	Nylon	71
TG-R10P	10 ton	Rear	9.6875	4.5	114	4	102	∅3.13	79	Poly	78
TG-R10S	10 ton	Rear	9.6875	4.5	114	4	102	∅3.13	79	Steel	109

Includes: (2) Rear Dollies with a Spreader Bar



# 24-80 TONS

## KITG-24P



## KITG-40P



### KITS

Hilman Part #	Capacity	Wheel Type	Wheel Count	Height (w/pad)		Height (w/o pad)		Weight (lb.)	Handle Length		Alignment Bar	
				(in)	(mm)	(in)	(mm)		(in)	(mm)	(in)	(mm)
KITG-24P	24 ton	Polyurethane	8/8	5.75	146	5.25	133	361	43.75	1162	72	1829
KITG-40P	40 ton	Polyurethane	16/16	5.75	146	5.25	133	442	43.75	1162	72	1829

All kits include: (1) Front Unit with Handle and (2) Rear Dollies with a Spreader Bar

## INDIVIDUAL FRONT

Hilman Part #	Capacity	Type	Width (in)	Height (w/pad)		Height (w/o pad)		Wheel Size		Roller Type	Weight (lb)
				(in)	(mm)	(in)	(mm)	(in)	(mm)		
TG-F12P	12 ton	Front	26.875	5.75	146	5.25	133	ø4.25	108	Poly	253
TG-F20P	20 ton	Front	39.1875	5.75	146	5.25	133	ø4.25	108	Poly	291

Includes: (1) Front Unit with a Tow Handle

## INDIVIDUAL REAR

Hilman Part #	Capacity	Type	Width (in)	Height (w/pad)		Height (w/o pad)		Wheel Size		Roller Type	Weight (lb)
				(in)	(mm)	(in)	(mm)	(in)	(mm)		
TG-R12P	12 ton	Rear	8.25	5.75	146	5.25	133	ø4.25	108	Poly	131
TG-R20P	20 ton	Rear	14.1875	5.75	146	5.25	133	ø4.25	108	Poly	162

Includes: (2) Rear Dollies with a Spreader Bar

## KITG-60P



## KITG-80P



### KITS

Hilman Part #	Capacity	Wheel Type	Wheel Count	Height (w/pad)		Height (w/o pad)		Weight (lb.)	Handle Length		Alignment Bar	
				(in)	(mm)	(in)	(mm)		(in)	(mm)	(in)	(mm)
KITG-60P	60 ton	Polyurethane	24/24	7.75	197	7.00	178	981	45.125	1146	96	2438
KITG-80P	80 ton	Polyurethane	32/32	7.75	197	7.00	178	1095	45.125	1146	96	2438

All kits include: (1) Front Unit with Toe Handle and (2) Rear Dollies with a Spreader Bar

## INDIVIDUAL FRONT

Hilman Part #	Capacity	Type	Width (in)	Height (w/pad)		Height (w/o pad)		Wheel Size		Roller Type	Weight (lb)
				(in)	(mm)	(in)	(mm)	(in)	(mm)		
TG-F30P	30 ton	Front	48.0625	7.75	197	7.00	178	ø5.51	140	Poly	603
TG-F40P	40 ton	Front	56.0625	7.75	197	7.00	178	ø5.51	140	Poly	667

Includes: (1) Front Unit with a Tow Handle

## INDIVIDUAL REAR

Hilman Part #	Capacity	Type	Width (in)	Height (w/pad)		Height (w/o pad)		Wheel Size		Roller Type	Weight (lb)
				(in)	(mm)	(in)	(mm)	(in)	(mm)		
TG-R30P	30 ton	Rear	17.25	7.75	197	7.00	178	ø5.51	140	Poly	378
TG-R40P	40 ton	Rear	21.0625	7.75	197	7.00	178	ø5.51	140	Poly	428

Includes: (2) Rear Dollies with a Spreader Bar  
Higher Tonnage available on request.



# 120-160 TONS

## KTG-120P



## KTG-160P



## KITS

Hilman Part #	Capacity	Wheel Type	Wheel Count	Height (w/pad)		Height (w/o pad)		Weight (lb.)	Handle Length		Alignment Bar	
				(in)	(mm)	(in)	(mm)		(in)	(mm)	(in)	(mm)
KTG-120P	120 ton	Polyurethane	12/12	11	279	10	254	2175	58 1/4	1480	192 1/4	4883
KTG-160P	160 ton	Polyurethane	16/16	11	279	10	254	2779	58 1/4	1480	192 1/4	4883

All kits include: (1) Front Unit with Toe Handle and (2) Rear Dollies with a Spreader Bar

## INDIVIDUAL FRONT

Hilman Part #	Capacity	Type	Width (in)	Height (w/pad)		Height (w/o pad)		Wheel Size		Roller Type	Weight (lb)
				(in)	(mm)	(in)	(mm)	(in)	(mm)		
TG-F60P	60 ton	Front	32 1/4	11	279	10	254	ø8.00	203	Poly	1222
TG-F80P	80 ton	Front	32 1/4	11	279	10	254	ø8.00	203	Poly	1525

Includes: (1) Front Unit with a Tow Handle

## INDIVIDUAL REAR

Hilman Part #	Capacity	Type	Width (in)	Height (w/pad)		Height (w/o pad)		Wheel Size		Roller Type	Weight (lb)
				(in)	(mm)	(in)	(mm)	(in)	(mm)		
TG-R60P	60 ton	Rear	15 1/4	11	279	10	254	ø8.00	203	Poly	953
TG-R80P	80 ton	Rear	20 1/2	11	279	10	254	ø8.00	203	Poly	1254

Includes: (2) Rear Dollies with a Spreader Bar



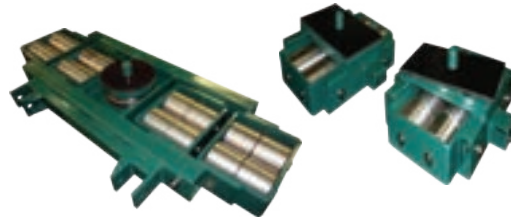
# MODIFIED

The Hilman Tri-Glide can be modified in a number of ways to accommodate your specific application requirements. Custom turntables and special hole patterns on the contact points are just a couple of examples where users have made the Hilman Tri-Glide System a perfect fit. Hilman also manufactures completely custom Tri-Glide Solutions to meet specific performance requirements.

### SWIVEL LOCKING TOPS



### LOCATOR PINS FOR REAR DOLLIES



### SPECIAL CONFIGURATIONS



### CUSTOM ATTACHMENTS



### CARTS



### HYDRAULIC CYLINDERS





**HILMAN INC.**  
**12 Timber Lane**  
**Marlboro, New Jersey 07746**  
**USA**  
**Phone: +1-732-462-6277**  
**E-mail: [sales@hilmanrollers.com](mailto:sales@hilmanrollers.com)**  
**Website: [www.hilmanrollers.com](http://www.hilmanrollers.com)**

**ISO 9001**

**9/2024**  
**CAT - 002**