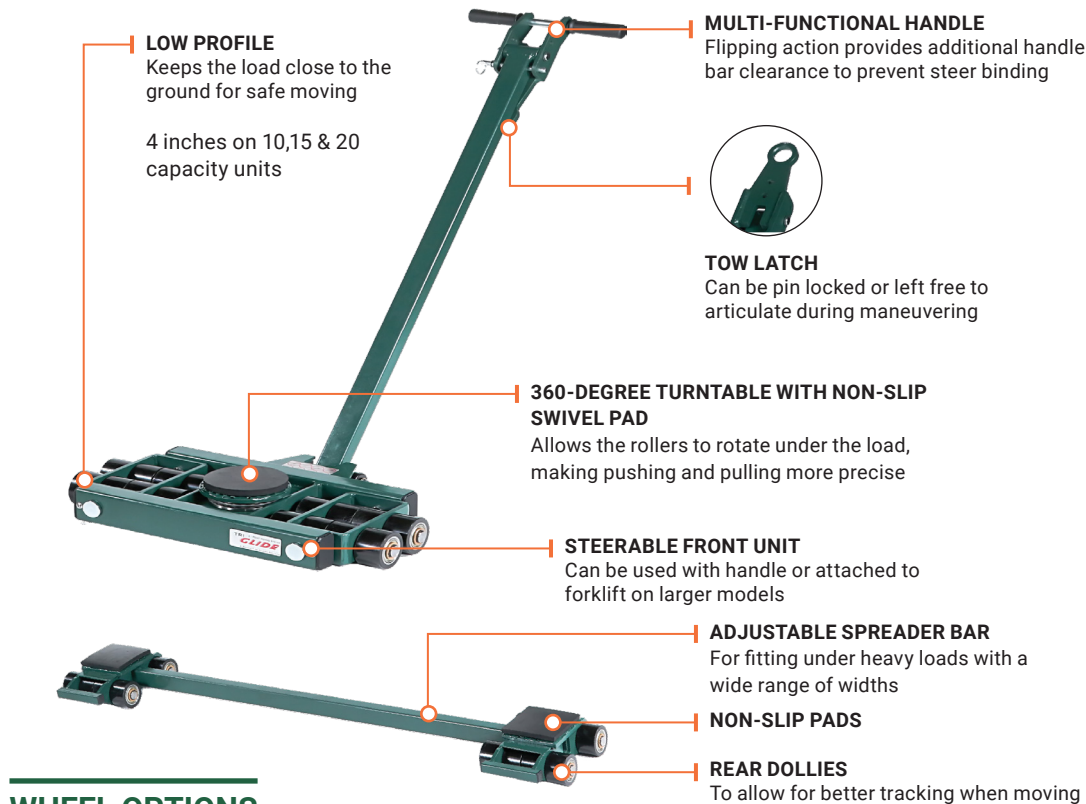


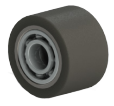
TRI-GLIDE



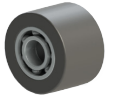
AVAILABLE IN 10, 15, 20, 24, 40, 60 & 80 TON



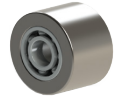
WHEEL OPTIONS



POLY WHEELS
Are a softer wheel that provide excellent floor protection on tile floors



NYLON WHEELS
For good floor protection and favorable wear. They will not "set" if left under load (static) for a period of time



STEEL WHEELS
Provide the best wear characteristics and are great for durable floors

Model	Capacity	Wheel Type	Wheel Count	Height (w/pad)	Height (w/o pad)	Weight	Handle Length	Alignment Bar
KTG-10N	10 Ton	NYLON	8/8	4.5" (114mm)	4" (102mm)	155	49.5" (1257mm)	60" (1524mm)
KTG-10P	10 Ton	POLY	8/8	4.5" (114mm)	4" (102mm)	161	49.5" (1257mm)	60" (1524mm)
KTG-10S	10 Ton	STEEL	8/8	4.5" (114mm)	4" (102mm)	193	49.5" (1257mm)	60" (1524mm)
KTG-15N	15 Ton	NYLON	12/12	4.5" (114mm)	4" (102mm)	168	49.5" (1257mm)	60" (1524mm)
KTG-15P	15 Ton	POLY	12/12	4.5" (114mm)	4" (102mm)	181	49.5" (1257mm)	60" (1524mm)
KTG-15S	15 Ton	STEEL	12/12	4.5" (114mm)	4" (102mm)	236	49.5" (1257mm)	60" (1524mm)
KTG-20N	20 Ton	NYLON	16/16	4.5" (114mm)	4" (102mm)	184	49.5" (1257mm)	60" (1524mm)
KTG-20P	20 Ton	POLY	16/16	4.5" (114mm)	4" (102mm)	198	49.5" (1257mm)	60" (1524mm)
KTG-20S	20 Ton	STEEL	16/16	4.5" (114mm)	4" (102mm)	260	49.5" (1257mm)	60" (1524mm)
KTG-24P	24 Ton	POLY	8/8	5.5" (140mm)	5.25" (133mm)	384	43.75" (1162mm)	72" (1829mm)
KTG-40P	40 Ton	POLY	16/16	5.5" (140mm)	5.25" (133mm)	467	43.75" (1162mm)	72" (1829mm)
KTG-60P	60 Ton	POLY	24/24	7.75" (197mm)	7.00" (178mm)	981	45.125" (1162mm)	96" (2438mm)
KTG-80P	80 Ton	POLY	32/32	7.75" (197mm)	7.00" (178mm)	1095	45.125" (1162mm)	96" (2438mm)



12 Timber Lane • Marlboro, New Jersey 07746 • USA
tel: 732.462.6277 | fax: 732.462.6355 | e-mail: sales@hilmanrollers.com

The specifications are given as general information only and are not binding. Hilman Rollers reserves the right to change specifications or make alterations to products, parts or accessory equipment at any time without prior notice and for any reason whatsoever.